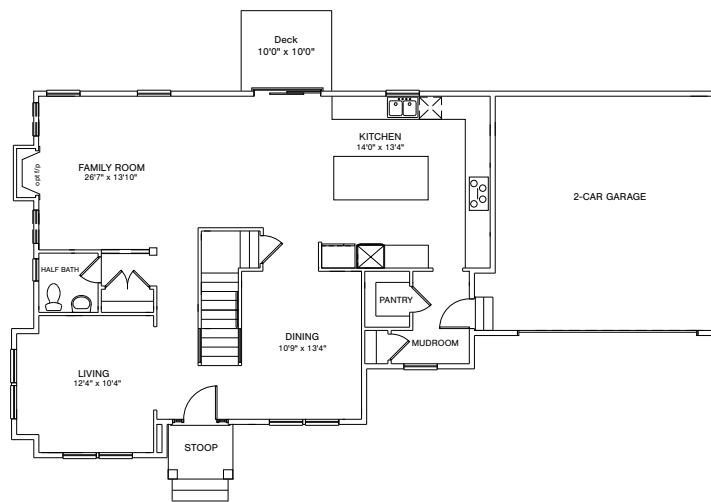




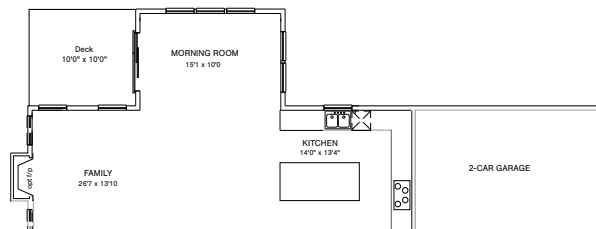
THE ST. JORDAN FARMHOUSE

4-5 BEDROOMS | 2.5-4.5 BATHROOMS | 2,838-5,120 SQ FT
2 CAR GARAGE | OPTIONAL BASEMENT

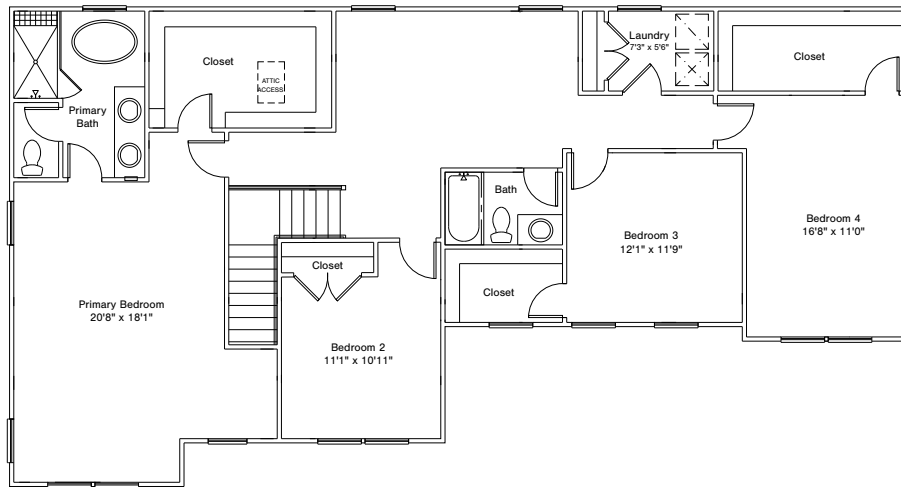




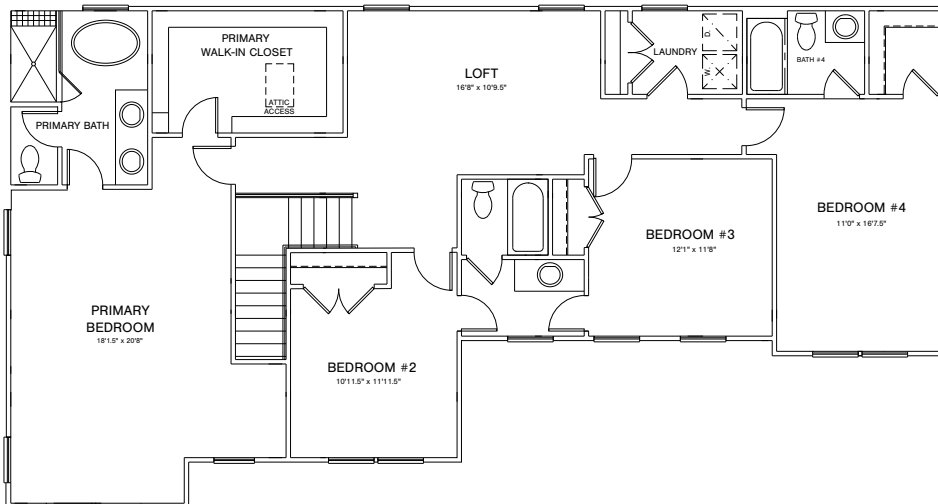
Standard Farmhouse First Floor



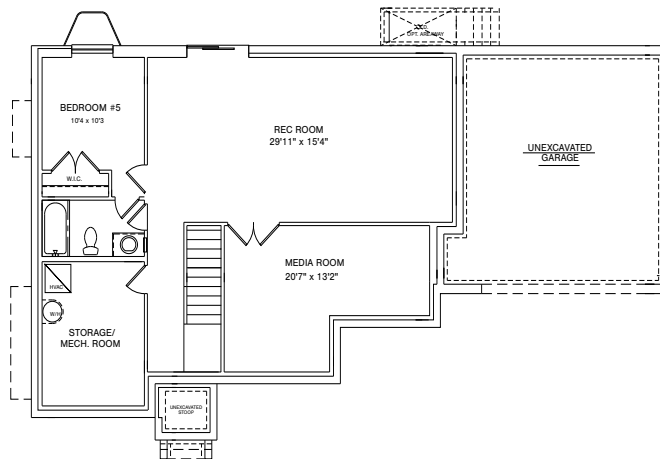
Optional Morning Room



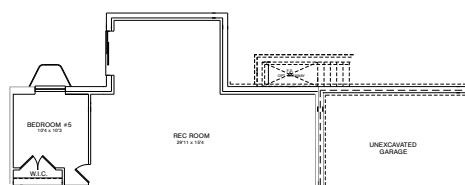
Standard Farmhouse Second Floor



Second Floor Additional Bathroom Option



Finished Farmhouse Basement



Farmhouse Basement w/ opt. morning room