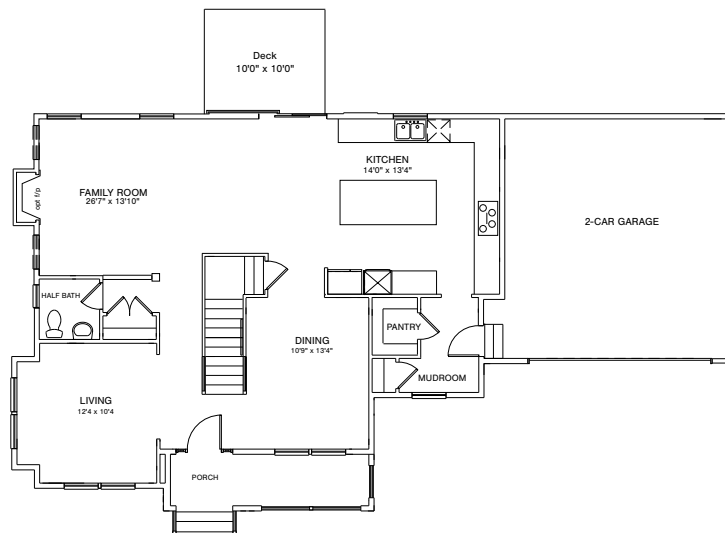




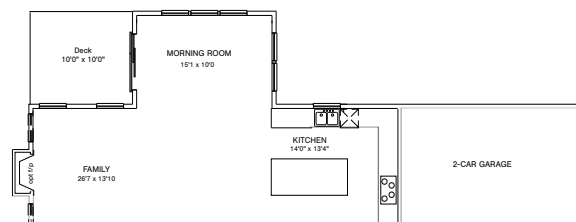
THE ST. JORDAN CONTEMPRARY

4-5 BEDROOMS | 2.5-4.5 BATHROOMS | 2,866-5,148 SQ FT
2 CAR GARAGE | OPTIONAL BASEMENT

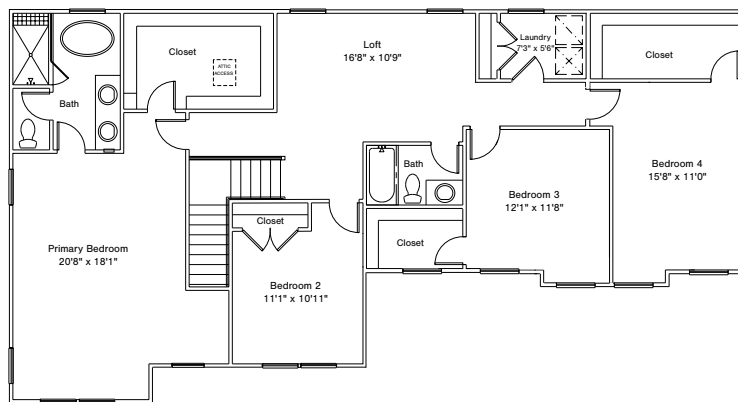




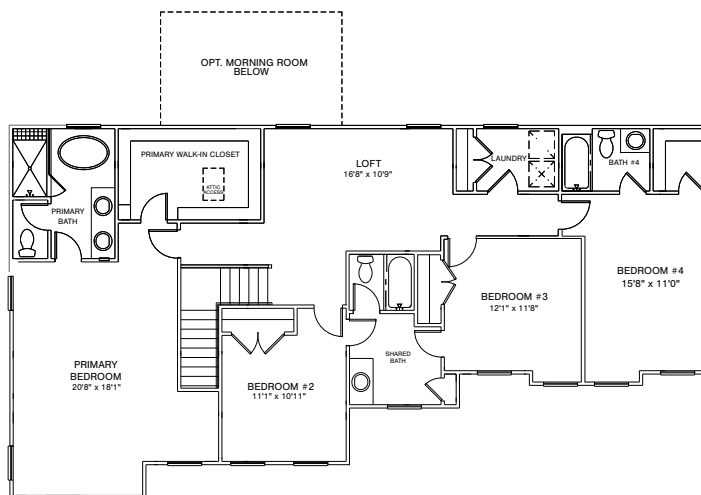
Standard Contemporary First Floor



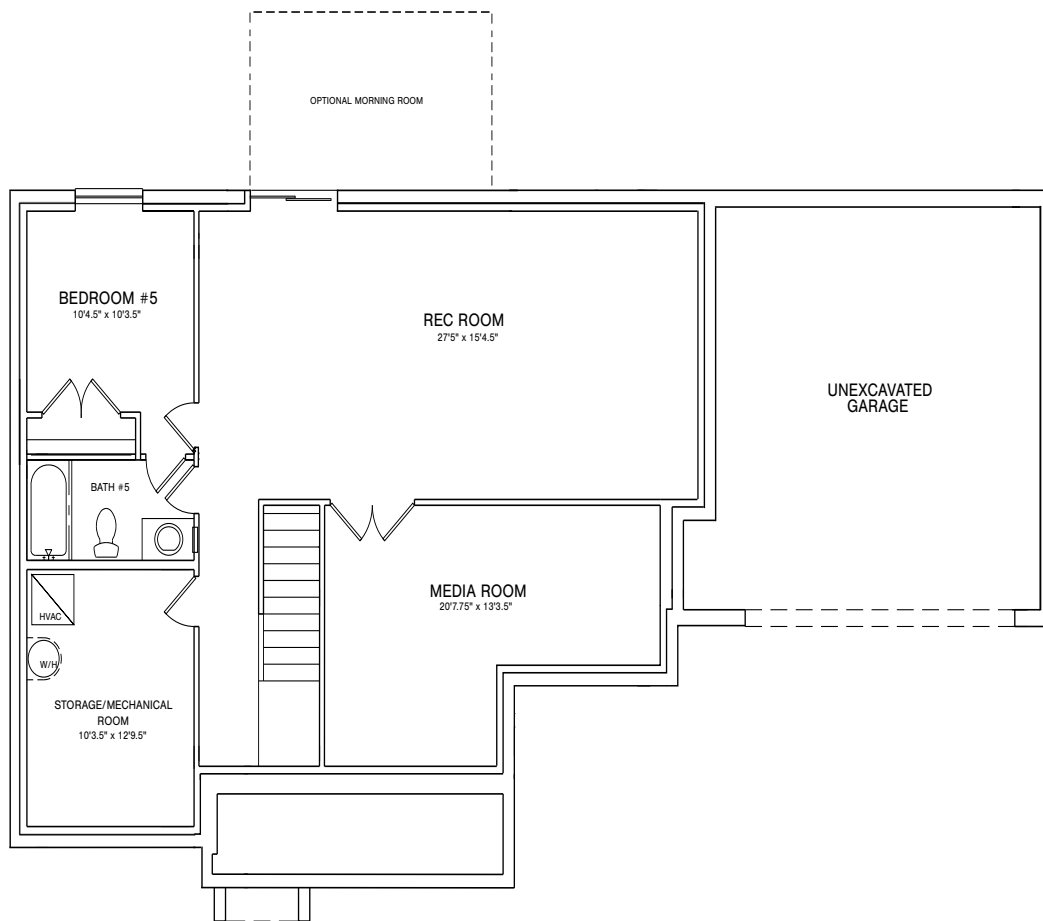
Optional Morning Room



Standard Contemporary Second Floor



Optional Shared Hall Bathroom



Finished Contemporary Basement