



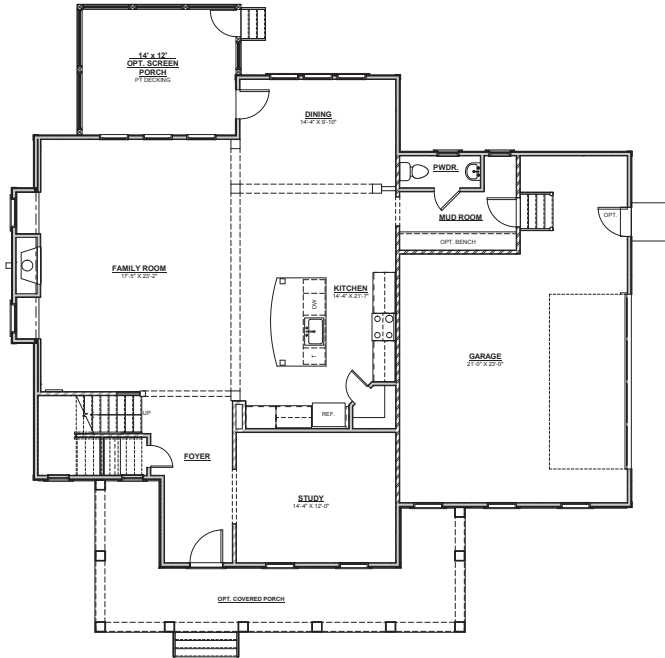
# THE KESWICK

4 BEDROOMS | 2.5 - 3.5 BATHROOMS | 3,218 SQ FT | 2.5 CAR GARAGE

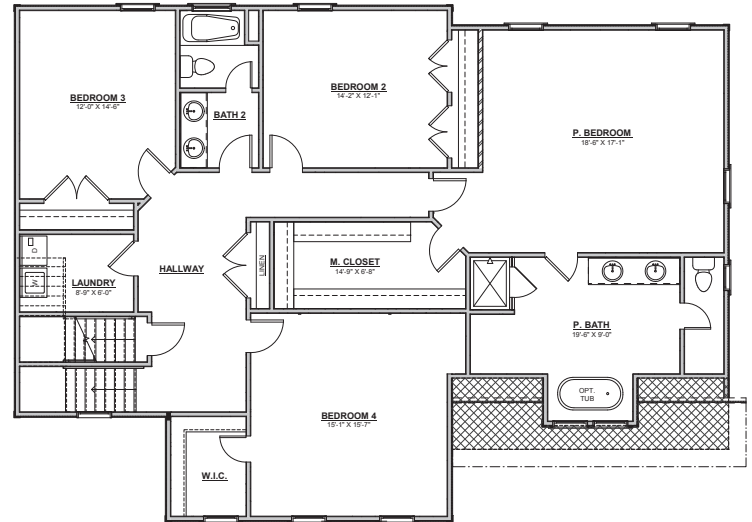




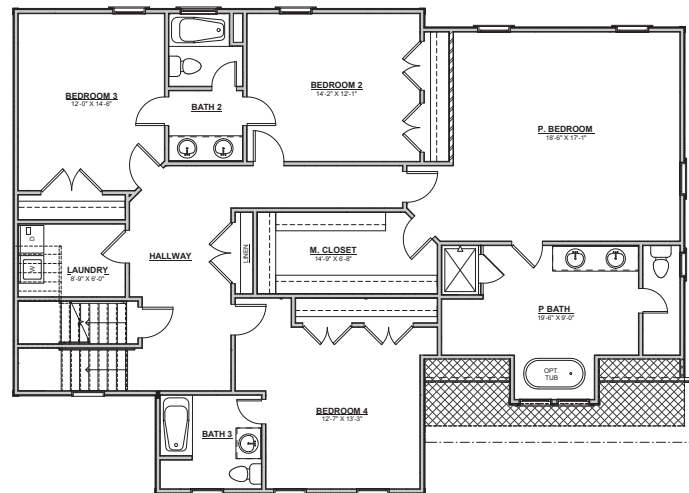
# HOMESMITH



**FIRST FLOOR**



**SECOND FLOOR**  
(STD) 4 Bedroom, 2.5 Bath



**SECOND FLOOR**  
(OPT) 4 Bedroom, 3.5 Bath



**804.NEW.HOME | [WWW.HOMESMITHVA.COM](http://WWW.HOMESMITHVA.COM)**

\*Renderings and floorplans may be shown with optional upgrades. Your choices are endless. Ask us for details. \*\*Be sure to reference the "Included Features" list for your community to confirm what features are included as some shown may be optional. All prices and specifications are subject to change without notice. © 2021 Homesmith Construction Inc.