



# THE ALEXANDER II

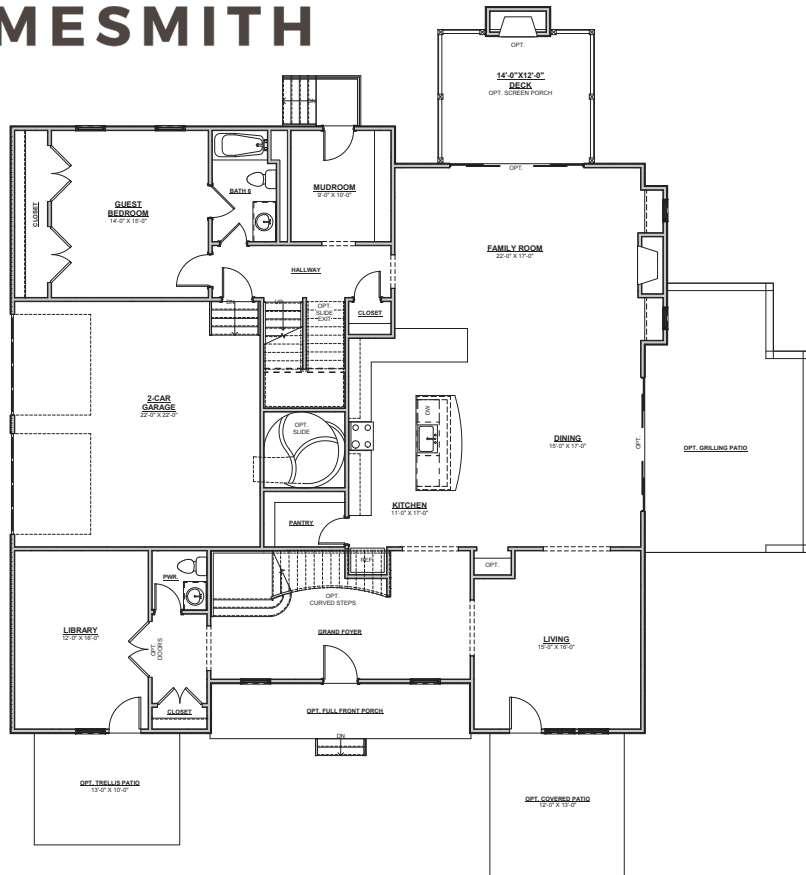
5 BEDROOMS | 5.5 BATHROOMS | 5,030 SQ FT | 3RD FLOOR AND BASEMENT OPTIONAL | 1ST FLOOR GUEST SUITE | 2 CAR GARAGE







# HOMESMITH



  
**YEATMAN**  
 GROUP

FOR MORE INFO CONTACT 804.NEW.HOME | [WWW.HOMESMITHVA.COM](http://WWW.HOMESMITHVA.COM)

\*Renderings and floorplans may be shown with optional upgrades. Your choices are endless. Ask us for details. \*\*Be sure to reference the "Included Features" list for your community to confirm what features are included as some shown may be optional. All prices and specifications are subject to change without notice

© 2021 Homesmith Construction Inc.